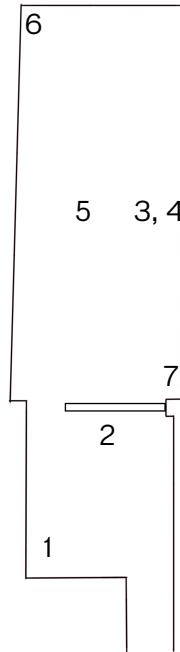


Daniel Burley

Skelf II

10 January - 22 February 2020



1. *An undead Gini under purple tartan coif of death mad drunk on brandy with scythes descending poised to strike from its back, it's tail curled to strike. It wears a vest from which looks Balitha. the left hand holding a stick augmented with the head of a leopard, tethered upon which by chain are two snivelling puppies, rabid and squirming. It laughs insanely with malice, pierced on the spines of its back is the still twitching corpse of a butterfly. Blood rolls from the eyes concealed beneath night vision goggles. A Butterfly bites into it's leather feathered upper scythe arm, brandy blood seeping, spilling.*
2019
Oil and Acrylic on Steel, Foam, Epoxy
H 73 x W 82 x D 87 cm
(Plinth H 62 x W 58 x D 58 cm)
2. *Grim O4 N16 / Chick Pyraktical Vault Door*
2019
Aluminium Spray on Steel, Foam, Epoxy, LED Light
H 100 x W 125 x D 30.5 cm
3. *Slossy / Skelf Family Tree II*
2019
Oil and Aluminium Spray on MDF, Foam, Jesmonite, Epoxy, Timber
H 260 x W 336.5 x D 31.5 cm
4. *Undead Si / Chick Revenge and Grimz: You Can't Escape It*
(Both are of ongoing *Skelf Vidz Corlektion* series)
2019
Single Channel Video
45 sec, 41 sec. Edition of 5
5. *C.O.P.P.S Trident* (part of *Slossy / Skelf Family Tree II*)
2019
Carpet
Dimensions Variable. Edition of 3
- 6 & 7. *Toxic Skrief (1) & (2)*
2019
Emulsion paint on Epoxy and Foam
H 22.5 x W 12 x D 7cm;
H 15 x W 7.5 x D 5cm